



**KJ71030**  
**2007-10 Jeep JK Lower Switch Panel**

**Thank you for choosing Daystar**

Daystar recommends a certified technician install this system . In addition to these instructions , professional knowledge of disassemble/reassembly procedures as well as post instructions checks must be known. Attempts to install this system without this knowledge and expertise may jeopardize the integrity and/or operating of the vehicle.

Please read all the instructions before beginning the installation. Check the kit hardware against the parts list. Be sure you have all the needed parts and understand where they go. If anything is missing , do not proceed with the installation, call Daystar Products to obtain needed items.

**Product Use Information**

As a general rule, the taller a vehicle is the easier it will roll. We strongly recommend , because of rollover possibility, that seat belts and shoulder harness be worn at all times. Avoid situations where a side rollover may occur.

Braking performance and capabilities are decreased when significantly large/heavier tires and wheels are used. Take this into consideration while driving, also , speedometer recalibration is necessary when larger tires are installed.

Do not add, alter, or fabricate any factory or after-market parts which increase vehicle height over the intended height of the Daystar Product purchased. Mixing component brands, lifts, and/or combining body lift with suspension lift voids all warranties. Daystar makes no claims regarding lifting devices and excludes any and all implied claims. We will not be responsible for any products that are altered.

**Notice to Dealer and Vehicle Owner**

Any vehicle equipped with any Daystar Product must have the “Warning to driver” decal installed on the sun visor or dash. The decal is to act a constant reminder for whoever is operating the vehicle of its unique handling characteristics. **INSTALLING DEALER**— Its is your responsibility to install the warning decal and forward these instructions on to the vehicle owner for review and to be kept in the vehicle for service life.

After installation occurs, a qualified alignment facility is required to align the vehicle to factory specs.



[www.Daystarweb.com](http://www.Daystarweb.com)  
Tech Support Contact Info  
[Tech@DaystarWeb.com](mailto:Tech@DaystarWeb.com)  
Phone: 623.907.0081  
Fax: 623.907.0088  
841 South 71<sup>st</sup> Avenue

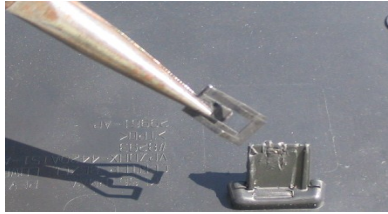
**Instruction Sheet P11285-01**  
**2011 Daystar Products International Inc.**

## Installation steps

1. Place the e-brake and pull the 4wd lever back to neutral and place the trans in 2nd gear, a manual trans put in 2nd gear.
2. Place a paper towel on the center dash panel so not to scratch the panel. With the paper towel in place , slide the screw driver between the dash and lower panel.



3. Push screw driver to the side to release the clips. Pull back the panel with your hand and remove panel.
4. With the panel removed, use needle nose pliers and remove the 2 clips. Take care not to break the clips.
5. With the needle nose pliers compress the clips flat so they will clip on the Daystar switch panel.



6. Working from the back side of the panel use your razor blade knife and cut out the switch holes. Do not over cut the hole.
7. You can cut out 1 to 4 switches in the panel. Install your switches. 1 to 4 of them.



9. Install the 2 clips on to the switch panel by pushing down on the clips with your hand.
10. Wire your switches.
11. Install the switch panel by putting the lower pins in first then push the top of the panel back to snap in the clips ( 2 ).



12. With the switch panel installed put the 4wd shifted back in 2wd and the trans in park.
13. With a manual transmission you will need to push down the shift boot to clear the switch's in the panel.

### TOOLS NEEDED

- Flat head screw driver.
- Needle nose pliers.
- Paper towel.
- Razor blade knife.

### BILL OF MATERIALS

- 1 Lower switch dash panel .

### ALSO AVAILABLE KJ71020 UPPER DASH PANEL

